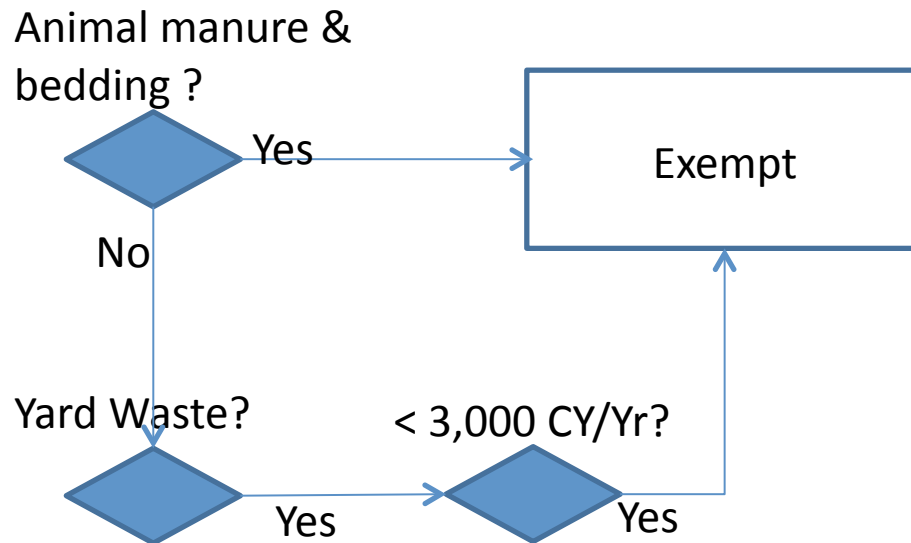


Puerto Rico Recycling Partnership Organic Team

Existing US Composting Rules

New York Composting Rules

Exemptions



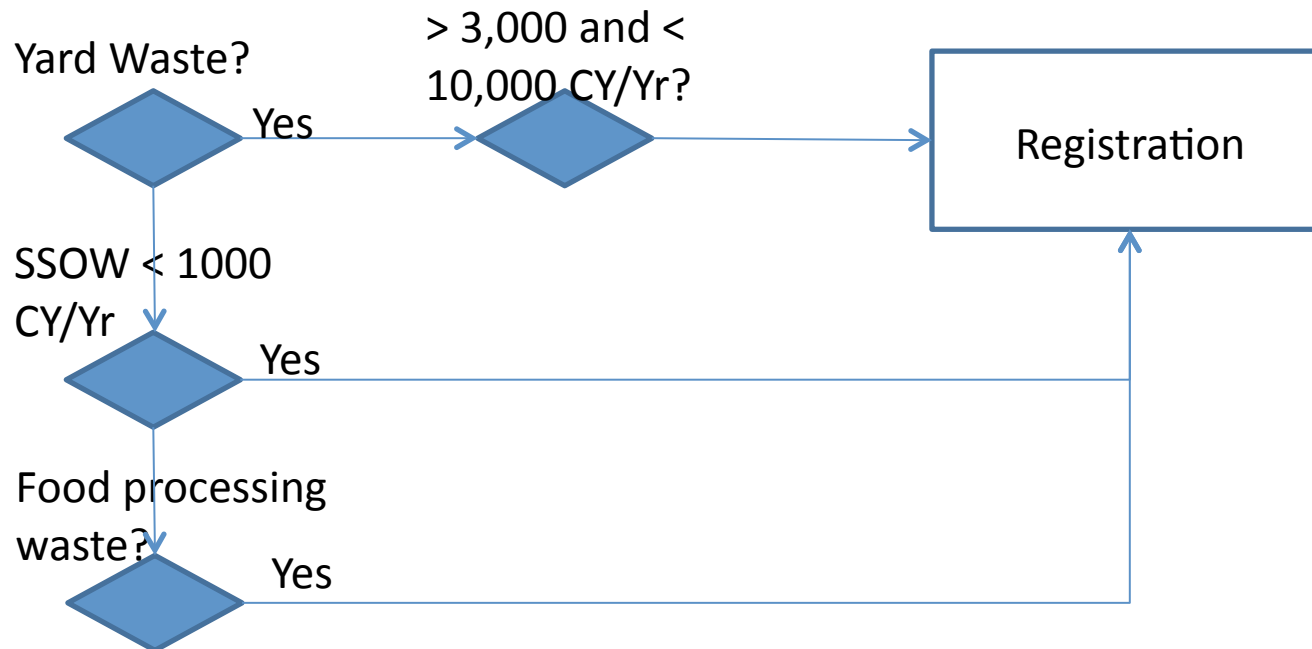
** No material accepted at the facility remains on-site unprocessed for more than 36 months.

** Facility will not produce dust or odors that unreasonably impact on neighbors.

** CY = Cubic Yards, Yr = Year.

New York Composting Rules

Registration



** SSWO = Source separated organic waste. Includes food waste, soiled paper and yard waste. Excludes biosolids, sludge or septage.

** Food processing waste = ???

** Use acceptable amendments or bulking agents.

** No material accepted at the facility remains on-site unprocessed for more than 36 months.

** Facility will not produce dust or odors that unreasonably impact on neighbors.

** CY = Cubic Yards, Yr = Year.

New York Composting Rules

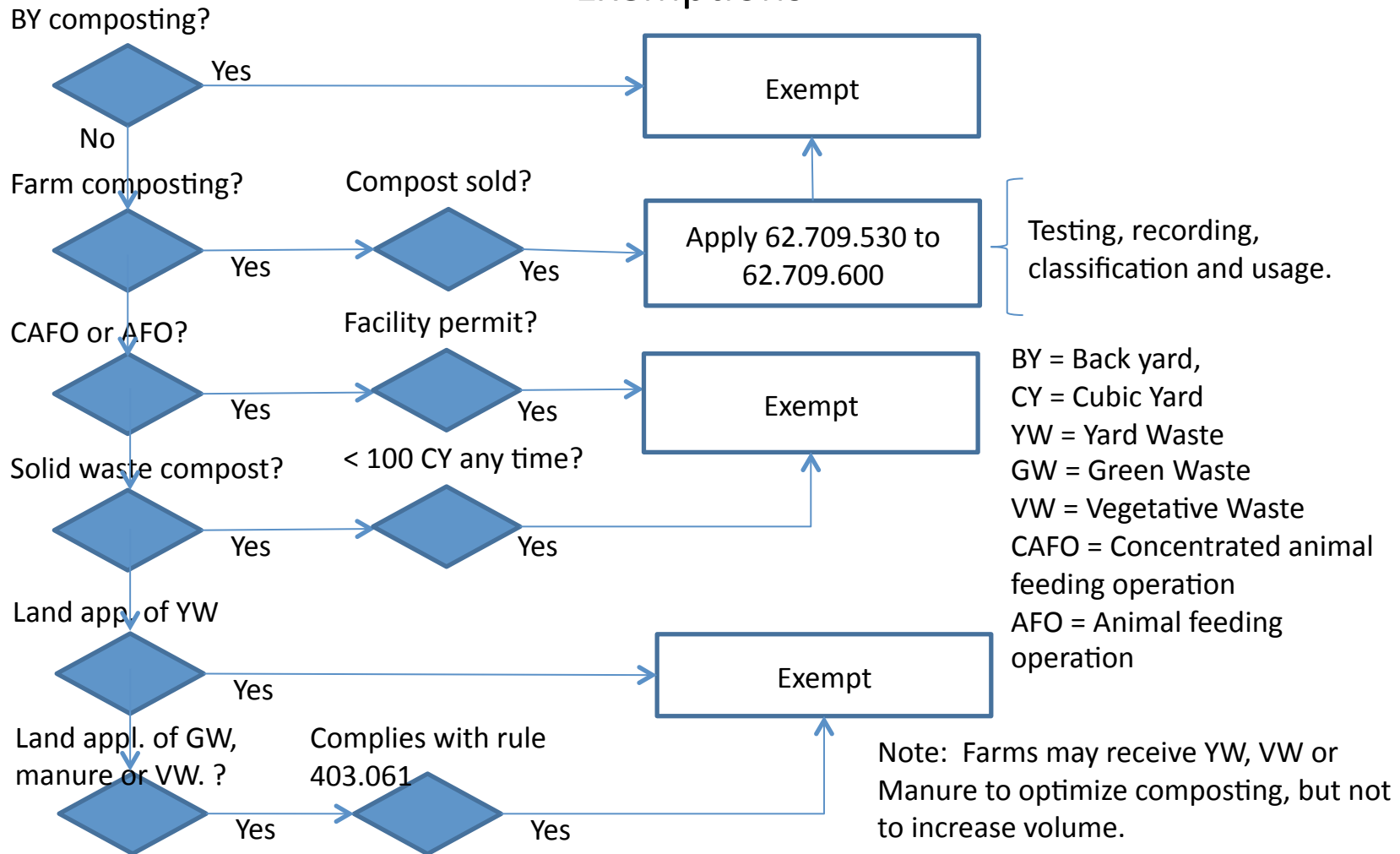
Pilot Programs

Comply with rule
360-1.13(b)

Waste amount is
limited to research
project results.

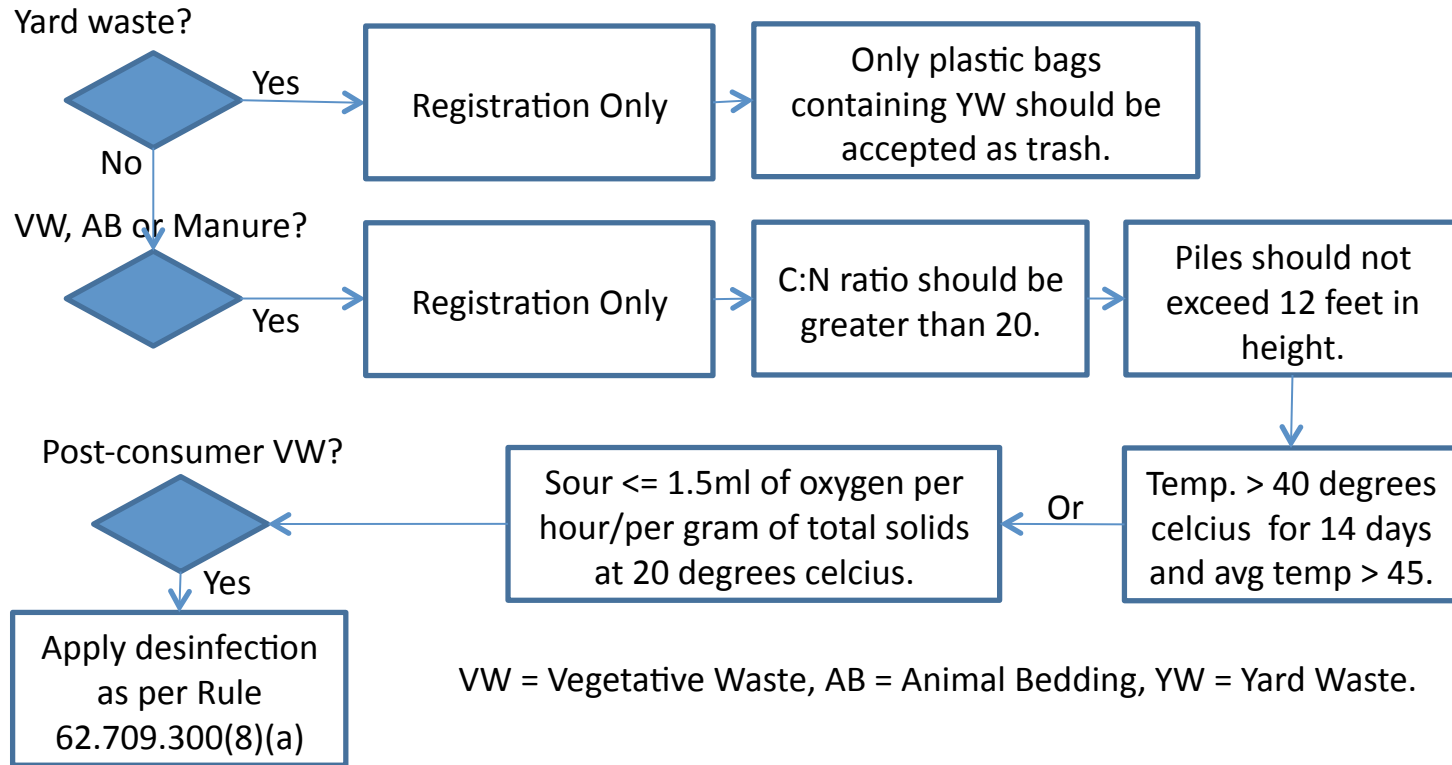
Submit form with
description of project,
purpose, waste to be
processed, etc.

Florida Composting Rules Exemptions



Florida Composting Rules

Registration



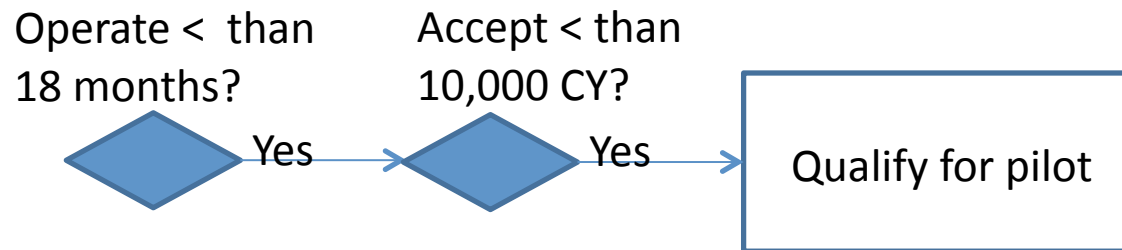
** YW, VW, AB and manure operations must remove processed material in 18 months and grind the material within 6 months, 3000 tons or 12,000 CY.

** YW, VW, AB and manure operations must comply with rule 62.709.300 (General Provisions), 62.709.550 (Classification of compost) and 62.709.600 (Criteria for the use of compost).

** Any putrescibles (birds can eat it) should be processed within 48 hours from receipt.

Florida Composting Rules

Pilot Programs



- ** Project must be over 250 feet from potable water well.
- ** Project must be over 100 feet from natural or artificial body of water.
- ** Project must have barrier, dust and litter control, fire protection, all-weather access roads and odor and vector control.
- ** Project are subject to rules 62.709.300 (General provisions), 62.709.550 (Classification of compost), 62.709.600 (Criteria for the use of compost), excluding rule 62.709.300(7).
- ** Form 62.709.901(4) must be filled to apply for pilot project.